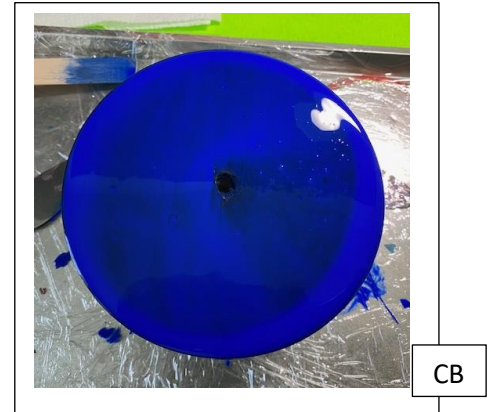


EYE BALL + EYE BOWL = EYE BAWL

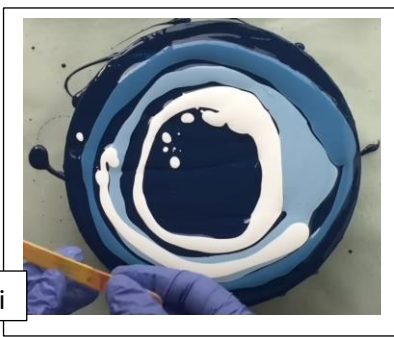
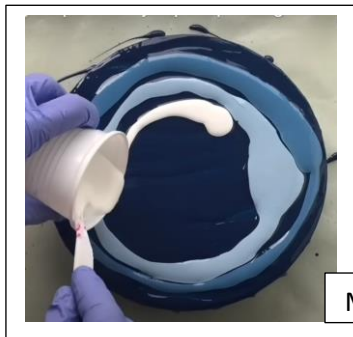
BY CHUCK BAJNAI 3/11/2024



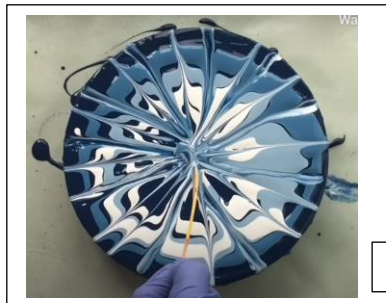
1. TURN AND FINISH BOTTOM OF THE BOWL. I TYPICALLY USE MORTISE - BUT TENON WORKS EQUALLY WELL.
2. REMOUNT AND TURN THE TOP. I SLIGHTLY ROUNDED THE TOP AND LEFT A LONG OVERHANG SO PAINT CAN DRIP OFF EDGE.
3. SPRAY PAINT THE TOP. I USED BLUE, BUT BLACK SHOULD BE WORK WELL TOO.



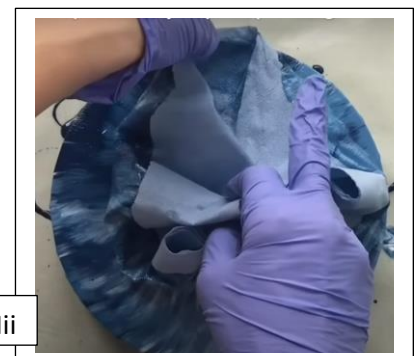
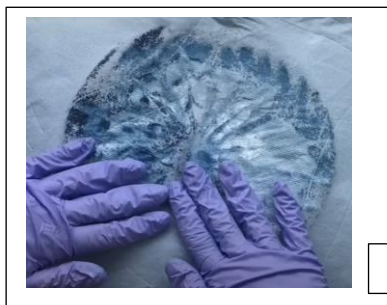
4. USE PAPER TOWEL OR WAX PAPER TECHNIQUE - COPIED FROM YOUTUBE: Mii Paintings - #168 Step by step EYE acrylic pour painting: <https://www.youtube.com/watch?v=s5pCU-uGCw8>



4A. CHOSE COLORS AND POUR PAINT IN CIRCLES RANDOMLY ACROSS TOP



4B. USING A POPSICLE STICK, CUT LINES GOING FROM INSIDE TO OUTSIDE - THE NUMBER OF SLICES IS UP TO YOU



4C. BLOT THE PAINT WITH PAPER TOWEL OR WAX PAPER. Mii IS USING PAPER TOWEL. I PREFER WAX PAPER BECAUSE SOME PAPER TOWEL BRANDS LEAVE AN UNDESIREABLE TEXTURE IN THE PAINT.

4D. LIFT THE FOUR CORNERS OF THE TOWEL OFF SIMULTANUOUSLY AND THE "SMEAR" IS COMPLETE



CB

5. THIS IS MY COMPLETED "SMEAR". NOTICE THAT I HAVE NOT DONE ANYTHING TO CREATE THE CENTER HOLE YET.

6. TURN THE BOTTOM OF THE BOWL AGAIN TO REMOVE ALL PAINT THAT DRIPPED ONTO THE BOTTOM OF THE BOWL, AND TRUE UP THE EDGES.



Mii

7. PLAN/DRAW INNER CIRCLE, I USED 1/3 DIAMETER.

THIS WILL BE HOLLOWED OUT LATER.



Mii

8. USING WHITE PAINT PEN - EXTRA FINE TIP (HOBBY LOBBY), DRAW IRREGULAR WAVEY LINES STARTING INSIDE AND DRAWING OUTWARD.



Mii



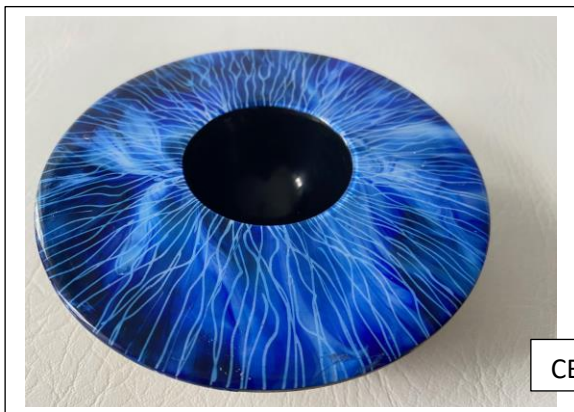
CB

9. APPLY MULTIPLE COATS OF CA FINISH, SAND AND APPLY MORE COATS...LIKE PEN TURNING

NOTICE THAT THE CA ADDED A LOT OF DEPTH TO THE PIECE



CB



CB

10. TURN THE HOLE WITH BOWL GAUGE.

11. MASK TOP AND SPRAY HOLE BLACK.

12. APPLY CA INSIDE HOLE.

13. POLISH TO 12000 GRIT WITH MICRO MESH, AND BUFF.

SECOND ATTEMPT

CB 4/20/2024

I EXPERIMENTED WITH THE SECOND EYE BOWL

1. FOR MY SECOND ATTEMPT, I SPRAYED THE TOP OF THE BOWL BROWN AND THEN USED TEMPURA PAINT. THE ADVANTAGE OF USING TEMPURA IS THAT IT IS WATER BASED AND DRIED IN HOURS, INSTEAD OF DAYS WHEN USING ACRYLIC PAINT. THE RESULTS WERE EQUALLY GREAT.
2. THE FIRST EYE BOWL WAS TURNED WITH NEARLY A FLAT TOP SURFACE BECAUSE I DID NOT KNOW HOW FAST THE PAINT WOULD RUN OFF THE EDGES. (I TAPED THE UNDERSIDE EDGES IN CASE THE PAINT WANTED TO RUN, BUT IT WAS VISCOUS ENOUGH THAT RUNNING WAS NOT A PROBLEM.) ON THE SECOND ATTEMPT, I DOMED THE EYE MORE, AND AGAIN THE PAINT DID NOT HAVE SIGNIFICANT RUNNING. AFTER THE PAINT DRIED, I REMOUNTED THE BOWL AND TURNED THE BOTTOM A SECOND TIME TO REMOVE THE SPILLED PAINT.
3. I USED WHITE AND GOLD FINE TIPPED PAINT PENS FOR THE DETAILING.
4. MY "SMEAR" DID NOT LOOK GREAT THE FIRST TIME. I WIPED OFF ALL OF THE PAINT AND 3 MINUTES LATER I REAPPLIED NEW TEMPURA PAINT. NO PROBLEMS STARTING OVER.



BOTTOM OF BOWL



BEFORE "SMEAR"

